



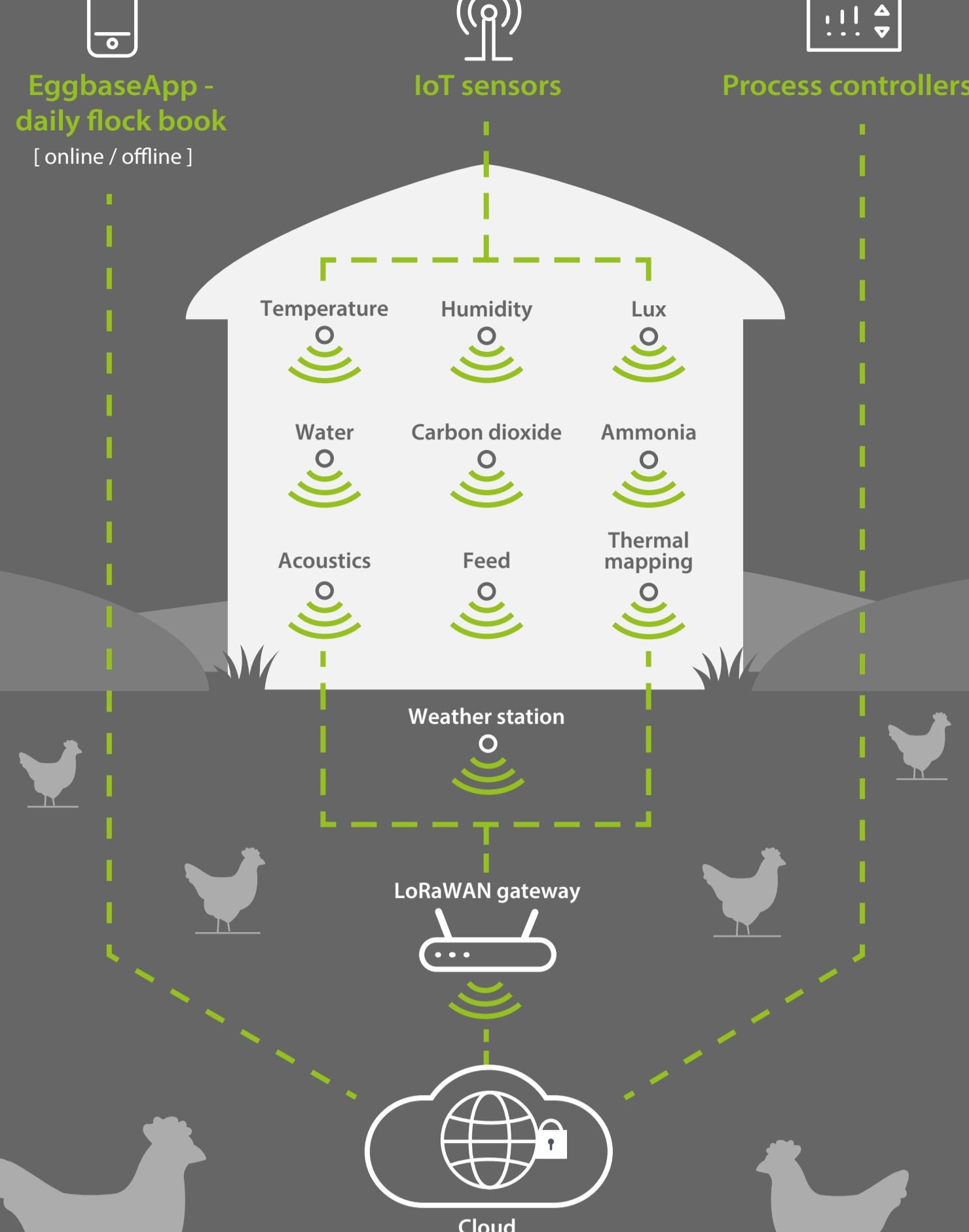
# UNLOCK THE POWER OF DATA

Pullet rearers

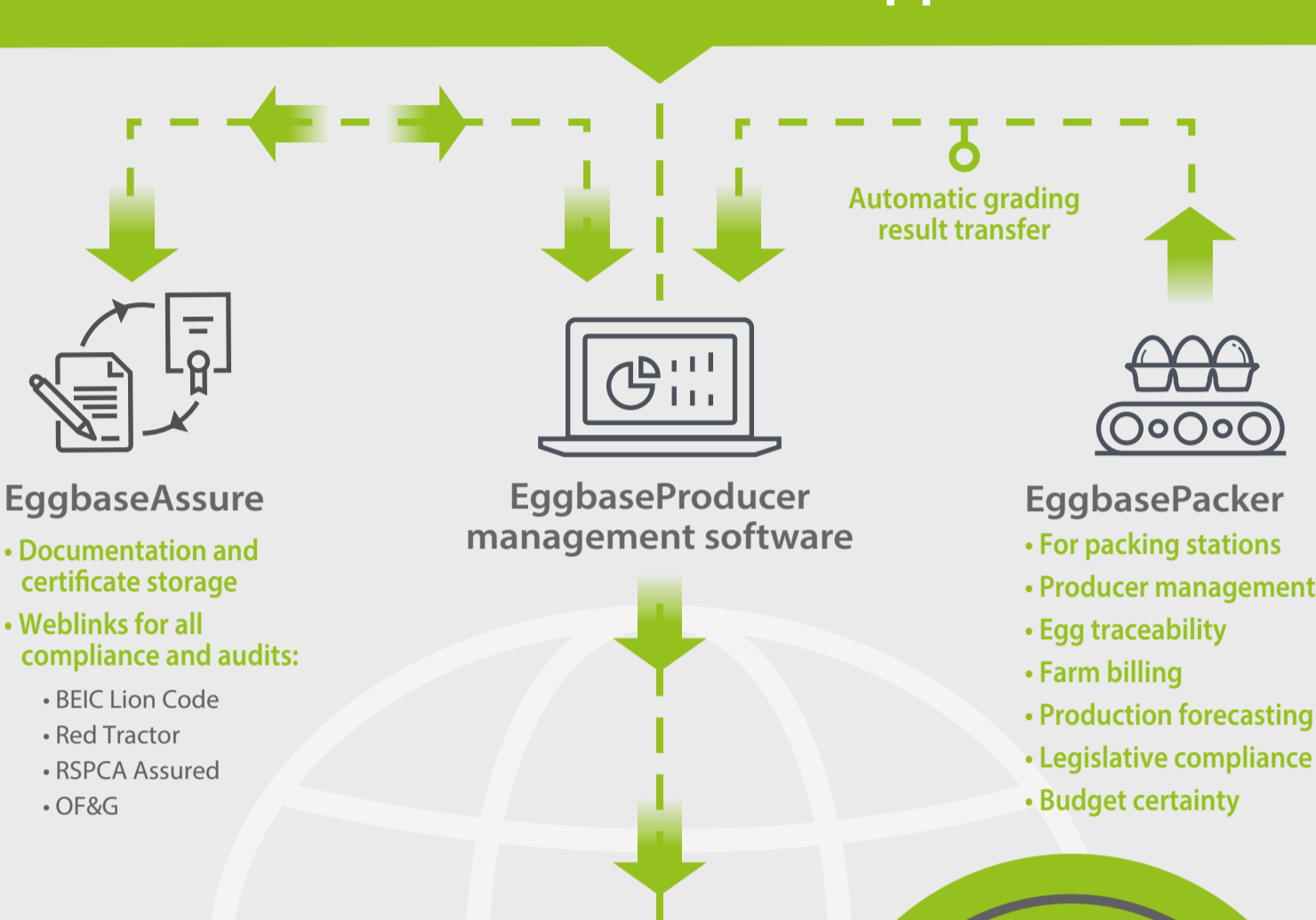
Egg producers

[ chicken, duck, quail, other fowl ]

Meat chickens



## Three innovative software applications



### EggbaseAssure

• Documentation and certificate storage

• Weblinks for all compliance and audits:

- BEIC Lion Code
- Red Tractor
- RSPCA Assured
- OF&G

### EggbaseProducer management software

### EggbasePacker

• For packing stations

• Producer management

• Egg traceability

• Farm billing

• Production forecasting

• Legislative compliance

• Budget certainty

### Precision

Real-time sensor data dashboard.

- SMSs alerts / email alerts
- Temperatures
- Humidity
- Lighting
- Carbon dioxide
- Ammonia
- Air flow
- Water
- Feed
- Acoustics
- Thermal mapping
- Weather station

### Welfare

Monitor welfare KPI's to demonstrate the Five Freedoms.

- Environmental monitoring
- Behavioural monitoring
- Salmonella routines
- Medical book
- Physical shed details
- Stocking density

### Bees

Remote hive monitoring providing vital colony information.

- Colony status and prosperity
- Acoustics
- Brood temperature
- Humidity
- Hive weight
- Bee counts
- Apiary weather conditions

### Visibility

Production data at grass-roots level.

- Egg numbers
- Mortality
- Bird weights
- FCR
- Water
- Electricity
- Av.egg size
- Grading results - automatically received from packing station
- Feather cover
- Litter scores
- Feed usage
- Water consumption

### Compliance

Ease adherence to legal requirements, assurance schemes and audits:

- Store compliance documents and certificates
- BEIC passports, salmonella certificates, vet reports, prescriptions, water tests, feed tickets, certificates of conformity and registration, site plans, audit reports, policies, procedures and training records
- Access online resources through web links
- Two-way message transfer between enterprise and producers
- EggbaseAssure can be used for any livestock, not just egg producers

## EggSense™ platform

- Data analytics, visualisations and correlations
- Aggregation from multiple data sources
- Permissioned data sharing
- Self-benchmarking
- Group benchmarking
- Eggbase benchmarking

## The advantages of remote access to producer groups by enterprises such as:



### Benchmarking

Benchmark flocks against each other, against breed standards and against flocks of other producers.

### Bespoke schedules

Set up bespoke feed, vaccination, biosecurity and management schedules for individual flocks for any management and research needs.

### Dashboard

Dashboard showing aggregated data from across the producer group:

- Flock performance by breed, rearing profile and feed type
- Graded egg sizes and weights by breed and feed type
- Seconds
- Seasonality

### Whole-life story

Achieve the 'whole-life' story of a flock from day old to end of lay through data transfer from rearing flocks to laying flocks.

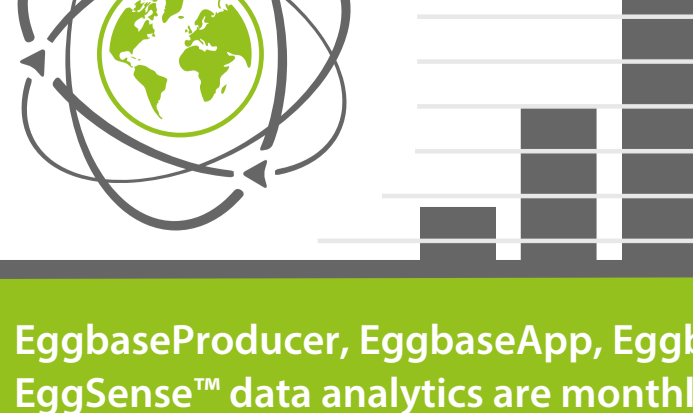
### Peace of mind

Peace of mind that all rearers and Producers are adhering to the BEIC Lion Code, RSPCA Assured, OF&G, SA, Laid In Britain and any other assurance scheme.

### Remote access

Remote access to individual producer dashboard showing actual and predicted:

- Graded egg sizes
- Graded egg weight
- Types of seconds
- Mortality / culls



- ### Trust in Eggbase
- ✓ Independent
  - ✓ Commercial confidentiality
  - ✓ Secure
  - ✓ Fully permissioned